

# 4G SOS GPS pendant



V50

## Important! Please read below statements:

Due to external factors all GPS devices have positioning error, so the position provided by this device is just for reference.

There may be delays caused by telecom carrier at certain circumstance. Our company doesn't assume to take responsibility of loss causes by this.

## Main features:

- 4G LTE +3G WCDMA+2G GSM
- Waterproof IPX7
- GPS+Beidou positioning, accuracy up to 5 m
- WIFI positioning, accuracy up to 30m
- Web platform/ Phone App for positions check
- Pill reminder and Pedometer
- Fall detection with alert
- SOS urgent call for help
- Speed dial call
- Call volume up/down
- Ring to find the device
- Historical route display/Geo-fence
- Low battery/SIM card changing alert
- Talking clock for real time voice telling

## Product specification:

4G-FDD: Band 1/2/3/5/7/8/20/28A

3G-WCDMA: Band 1/2/5/8

2G-GSM: Band 2/3/5/8

**GPS locating time:** 30sec with cold boot (open sky)  
29sec with warm boot (open sky)  
5sec with hot boot (open sky)

**GPS positioning accuracy:** 5-15m (open sky)

**WIFI positioning accuracy:** 15-100m(Under WIFI range)

**Working temperature:** -20°C ~ +70°C

**Working humidity:** 5% ~ 95% RH

**Host size:** 61(L)\*45.5(W)\*18.5 (H)mm

**Host Net weight:** 44g

**Battery:**1000mAh

## Accessories:

1\* GPS pendant

1\* User manual

1\* Magnetic USB cable

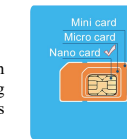
1\*Lanyard

1\*Screw driver

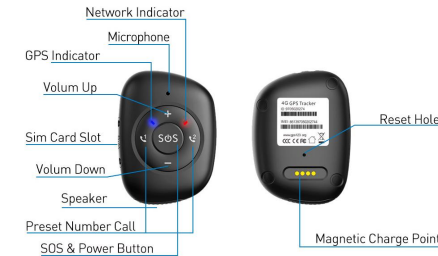
1\*SIM card tray

## Step 1: Get a new SIM card

1. Get a new Nano SIM card as below instruction.
2. Activate the SIM card's Cellular data plan and Caller ID display function. (Tracking needs consume data, making phone calls also needs charges.)



## Step 2: Learn your GPS Tracking pendant details:



## Step 3: SIM card installation and power on

- 1). Make sure the pendant is off before installing a SIM card;
- 2). Open the Sim slot with screw driver and insert a SIM card into the SIM slot, then fasten the cover with screws;
- 3). Press SOS button for 5 to 7s still the device rings and blue & red indicators on for 2s, release the button and the device is on;
- 4). After the device reads the SIM card, the device can be turned off only via App settings.



## Indicator instructions:

GPS and GSM indicator status:

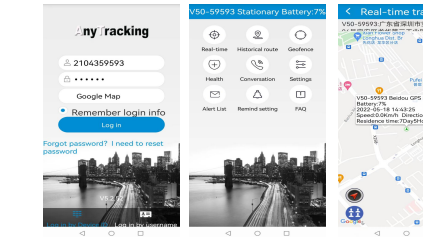
	Color	Status	Meaning
Power on	Red (Network)	Slow flash	Network searching
		Fast flash	Network ok
	Blue (GPS)	Slow flash	In positioning
		Fast flash	Position uploaded

In charging	Red	Slow flash	In charging
		Always on	Fully charged
	Blue	Slow flash	In charging
		Slow flash	Fully charged

Low battery: the red indicator slow flash only

## Step 4: Install APP by tracker Guardian

Use the guardian's mobile phone to scan the QR code on the back cover of the instruction manual to download and install the GPS positioning app.



## Step 5: Login App

Login the App with the 10 digits ID No. on back label, default password is 123456. (To monitor more pendants at the same time, please contact the seller for a user account.)

## Step 6: Location check

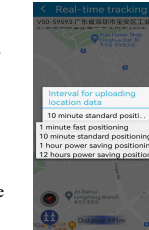
## Real time tracking and interval for uploading:

Display the last location of GPS pendant. Press the icon on map upper right corner. Press the "interval for uploading" and choose different interval times. For fast locating, choose every 1 minute; To save battery, choose 10 minutes or longer options.

➤ **Historical route:** Display the historical route of any day in recent 90 days. You can choose whether to filter out LBS location data. (Note: LBS means the location data indoors, the accuracy is not good.)

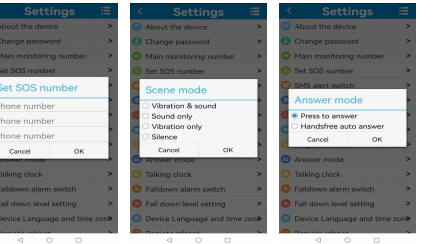
➤ **Geo-fence:** Includes GPS-fence and WIFI fence.

✓ **GPS-fence:** when the device gets into or out of the GPS-fence. The App will get alert. (Note: we suggest to set the radius of GPS-fence over 300 meters to reduce



- false alerts.)
- ✓ **WIFI-fence:** You can choose 2 WIFI hotspots as safe zones, when device leaves safe WIFI zones, the App will get alert.
  - **Health:**
    - ✓ **Health Step:** Turn on this from App and fill in basic info to get wearer's motion status.
    - ✓ **Pill Alarm:** Set medicine reminders accordingly.
  - **Conversation:**
    - ✓ **Call to Tracker:** To call your pendant when click it; (This function works after filling in "Device phone number" in section of "About the device".)
    - ✓ **Voice monitoring:** To request a one-way call from pendant to the phone number the user fills in and hear the sound around the pendant.
  - **Settings:** All settings need to work when App shows device online by using the sim card's data plan.
    - ✓ **About the device:** Check and edit tracker pendant's information.
    - ✓ **Change password:** Change APP and Web platform's password.
    - ✓ **Main monitoring number:** For sending SMS commands

- and receiving alerts.
- ✓ **Set SOS number:** Preset SOS numbers for SOS call receiving and sound monitoring.
  - ✓ **SMS alert switch:** Turn on this setting to enable the pendant to send SMS alerts to the main monitoring number or turn off it if no need.
  - ✓ **Safe mode:** When turns on, the pendant can only get through calls from SOS numbers or those in phonebook list. Otherwise, all numbers can call it.
  - ✓ **Scene mode:** Set the alarm ways of pendant's coming call, pill reminder, alarm clock, etc. There are four modes:



- Ringtone reminder, vibration reminder, ring & vibration reminder and no reminder.
- ✓ **Clock alarm:** Set three different alarm modes accordingly.
- ✓ **Find device:** After the command sent, the pendant will give out ringtone to guide the guardian to find pendant and the wearer fast.
- ✓ **Answer mode:**
  - Auto-answer:** Any numbers in white list can dial the pendant number. With two ringtones, the pendant user can talk with the caller.
  - Push to answer:** Any numbers in white list can call the pendant and talk with its user after its power button is pressed once manually when a call comes.
- ✓ **Talking clock:** Turn on or off the time telling. After it is turned off, the device will not tell the time when short press the SOS button.
- ✓ **Fall down alarm switch:** Turn on or off fall sensor.
- ✓ **Fall down level setting:** 6 sensitivities to choose, 0 is the most sensitive level. Please set accordingly. (Note: There are false alerts of fall down, please use it only for reference.)
- ✓ **Device Language and time zone:** Set pendant SMS alerts' language and time zone. Options are Chinese and English;

- default time zone is +8. Usually, the time zone will match automatically after the SIM card is read by the pendant.
  - ✓ **Remote reboot:** To reboot the pendant from this setting.
  - ✓ **Remote power-off:** To power-off the pendant remotely, the pendant will beep twice. (The pendant can be only turned on by manually after this setting. Please use with caution)
  - **Restore factory settings:** To delete all records of the pendant, including historical route and other data and back to factory settings.
  - **Alert list:** All alerts will be listed here.
  - **Remind setting:** Turn on or off App alerts notifications.
  - **Logout:** Log out from the App.
- Web platform:** [www.gps123.org](http://www.gps123.org); Same login way as the one for App.

#### Step 7: Power off the pendant

- When no SIM card in the pendant, long press the power button for 5-7s to power off it after a ringtone.
- When a SIM card inside and signal OK, to avoid wrong operation, the pendant can be powered off only via App setting.

#### Matters need attention:

- ◆ Please use this pendant in the area of good network signal.
- ◆ For a better performance, please charge the new device for 3 hours.
- ◆ The pendant's standby time is about 5 days with default location uploading interval of 10 minutes. (Note: the result is based on the device status with good networks.)
- ◆ To extend battery life, please charge and discharge the tracker fully at least one time in 3 months.
- ◆ After inserting the card, please cover the SIM card, tighten the screws, and pay attention to the direction, otherwise the waterproof effect will be affected.
- ◆ The tracker is waterproof IP67, but we don't suggest to dip it into water for too long time.
- ◆ Please don't open the tracker case by yourself, as it may affect the waterproof and lose the warranty right.
- ◆ The tracker uses Cell tower signal (LBS) or WIFI when indoors, the locating accuracy depends on tracker distance to signal tower and other facts, like metal and surroundings. Due to the restrictions and influences of the use environment, the civil equipment has deviations in positioning which is not a quality problem, and is not subject to quality problems for after-sales processing.

#### FAQ:

- Q: After inserting a SIM card, it can get SMS reply, but it displays "Not enabled" on the platform and APP.**  
**A:** Please check the tracker SIM Card has data plan.
- Q: Device is online, but it shows "wait for the device responses" when you make settings with APP.**  
**A:** a. Device SIM signal is not good with poor data transfer;  
 b. Device is busy in other process. Please wait and try again.
- Q: What to do when the device crashes?**  
**A:** Short press the RST hole with the removal pin to restart the device. Do not press the hole long time, otherwise it will get damaged.
- Q: The SIM card has data plan, but the device still shows "Not enabled" or "offline".**  
**A:** Please send below SMS command from your own cellphone to the tracker SIM card number to set APN into the tracker. The command is:  
 pw,123456,apn,apndata,user,password,MCC MNC code#  
**For example:** pw,123456,apn,internet,,,78502#  
**(Note:** The blue parts are different according to different SIM providers. If user and password are blank, delete them from the command but keep the commas. There is no space between them and all letters shall be in lowercase style.)



Scan the QR code to install tracking App  
 Or search for **Anytracking** in App store